

# NOTELUN ©

## Notes and documents manager of the Virtual Moon Atlas Documentation usable for version 8

***Welcome in "NOTELUN » the notes and documents management module integrated in the "Virtual Moon Atlas".***

As amateur astronomers, we continue to improve **VMA** for conceiving a useful software for lunar observer also efficient "on the field". We try to add new functions and a user friendly interface.

This is why we have added a new notes and documents manager called "**NOTELUN**" (copyrighted name) that allows you to prepare, centralize and study personal notes and external documents of all types directly in **VMA** for your observing or imaging sessions or personal surveys.

This first version includes the most useful functionalities that we thought. We plan other eventual possibilities in next versions

This manual is necessary to discover all its possibilities. We advice you to read it carefully while testing the described functions.

Good use and we hope that you will appreciate this new software and recommand it around you.

Thank you very much for your confidence.

**Christian Legrand & Patrick Chevalley**

---

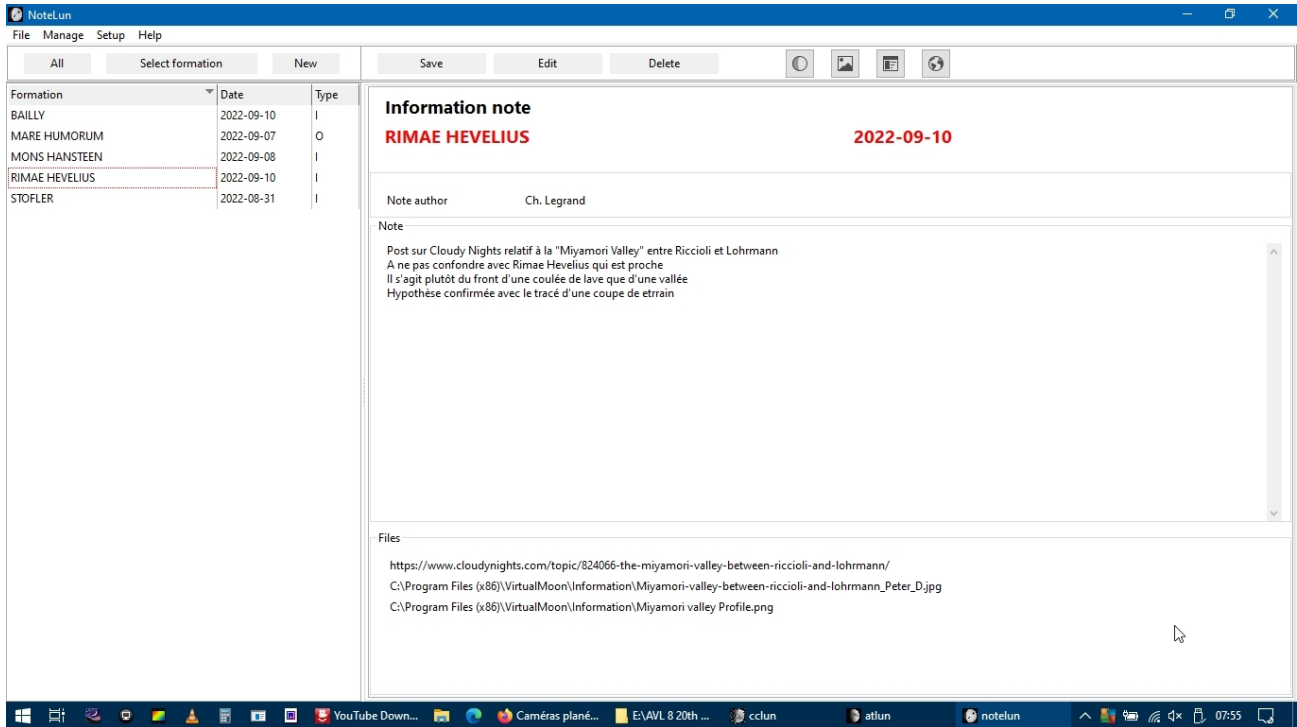
## **THE NOTELUN MODULE :**

**NOTELUN** © is one module of the Virtual Moon Atlas as a lunar formations linked notes and documents manager.

It can be launched in the "**Command Center**" module when clicking on the **NOTELUN** button or in the buttons bar of the **ATLUN** module.

It's also possible launch it from the mouse right click context menu of the ATLUN module. And finally, it's possible to launch it when clicking on the **notelun.exe** file present in the directory **VirtualMoon**.

## THE NOTELUN SCREEN



The **NOTELUN** screen is in a Windows frame. As all the Windows frames, you can minimize, maximize or adapt its size if you click on the upper right buttons in the title bar.

You can also launch simultaneously the others **VMA** modules (**DATLUN** / **PHOTLUN** / **WEBLUN** / **CALCLUN** (c) and **NOTELUN** permitting a wide Moon study while accessing all the **VMA** ressources.

The **NOTELUN** window features :

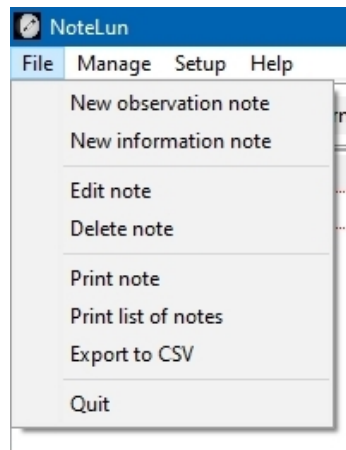
- The **menus bar**
- The **headband**
- The **notes list** on the left
- The **note display window** on the right

**IMPORTANT : We recommend to manage first all the datas entries provided in the "SETUP MENU" before beginning notes creation.**

## THE MENUS BAR

This bar has four menus.

### THE "FILE" MENU



It is used in NOTELUN to create, modify, delete, export and print notes.

### "New observation note" Function"

This option gives access to the creation of a new observation note.

An observation note is a note reporting an observation or imaging session for a given lunar formation. It therefore includes all the information on the conditions specific to its development:

- Place of realization
- Ephemerides
- Material
- Operator
- Weather situation
- Description of the observation session
- Associated files (Images / Videos / Sound commentary...)

**IMPORTANT:** In order not to saturate the hard disk of the computer supporting **VMA**, it is recommended to place these associated files on a dedicated storage device (USB key / SD card / External hard disk...) connected to this computer. It is suggested that you organize this storage with sub-directories with the names of the formations covered by information or observation notes. Of course, these associated files will only be accessible from **NOTELUN** if this dedicated storage device is connected to the computer supporting **VMA**.

The screenshot shows the Notelun application window. On the left, there is a table of lunar formations:

Formation	Date	Type
BAILLY	2022-09-10	I
MARE HUMORUM	2022-09-07	O
MONS HANSTEEN	2022-09-08	I
RIMAE HEVELIUS	2022-09-10	I
STOFER	2022-08-31	I

The right side of the interface contains a form for recording observations. The top bar has buttons for 'Save', 'Edit', and 'Delete'. The form fields include:

- Observing place: PREAUX
- Observer: LEGRAND Christian
- Observation start: 2022-09-11 00:00:00
- Observation end: 2022-09-11 00:00:00
- Meteorological condition: (empty field)
- Seeing: (empty field)
- Gear section:
  - Instrument: NEXSTAR 127 SLT
  - Barlow/reducer: Celestron Ultima
  - Eyepiece: Plossl Meade Series 4000
  - Camera: N/A
  - Magnification: 250x, FOV: 12.5'
- Ephemeris section:
 

Libration longitude	Libration latitude	Lunation
Colongitude	Sub-solar latitude	Illumination
RA apparent	DE apparent	Position angle
Azimuth	Altitude	Diameter
- Note: (empty text area)
- Files: (empty list area with 'Add', 'Paste', and 'Delete' buttons below)

You have access to all the Circumstances / Equipment / Note / File fields of the note on the right to modify the content.

**As for the files linked to the note**, use the "Add", "Paste" and "Delete" buttons to manage them.

The "Add" button allows you to link a file present on a digital storage device physically linked to the same computer: Hard disk / SD card / USB key.

The "Paste" button is used to link the form to a Web address.

**Once the changes have been made, you MUST click on the "Save" button in the top banner to save the new content. Otherwise, it will be irretrievably lost.**

### "New information note" Function

This option gives access to the creation of a new information note.

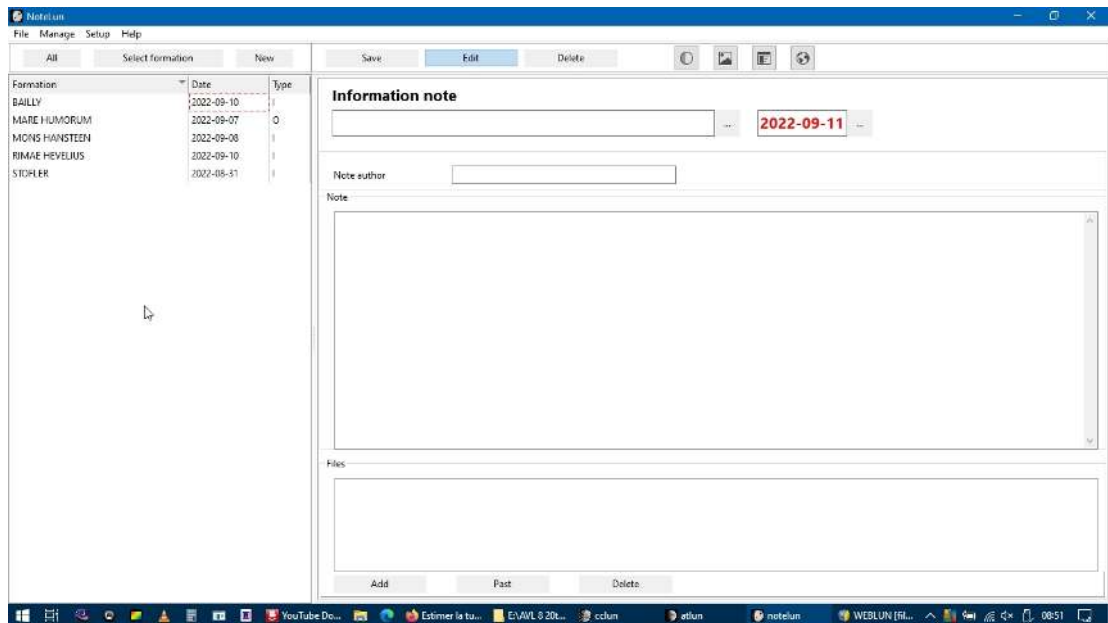
An information note is a note containing information relating to a given lunar formation. It may also include links to files on a digital storage device physically linked to the same computer: Hard disk / SD card / USB key

The associated files can be of different formats: Text document / Word / PDF / Image (jpg - png - tif...) / Video (mp4 - avi...) / Sound recording (mp3 - wav...)

**WARNING:** these documents are accessible directly from **NOTELUN** if the appropriate reading software is installed on the same computer.

**IMPORTANT:** In order not to saturate the hard disk of the computer supporting **VMA**, it is recommended to place these associated files on a dedicated storage device (USB key / SD card / External hard disk...) connected to this computer. It is suggested that you organize this storage with sub-directories with the names of the formations covered by information or observation notes. Of course, these associated files will only be accessible from **NOTELUN** if this dedicated storage device is connected to the computer supporting **VMA**.

It may also include links to web addresses containing other information (with the risk that this page will one day disappear from its hosting site and will no longer be accessible). This is why it is rather recommended to save this web page with its associated subdirectory with the files associated with **NOTELUN**.



You have access to all the Name / Author / Note / File fields of the note on the right to modify the content.

**As for the files linked to the note**, use the **"Add"**, **"Paste"** and **"Delete"** buttons to manage them.

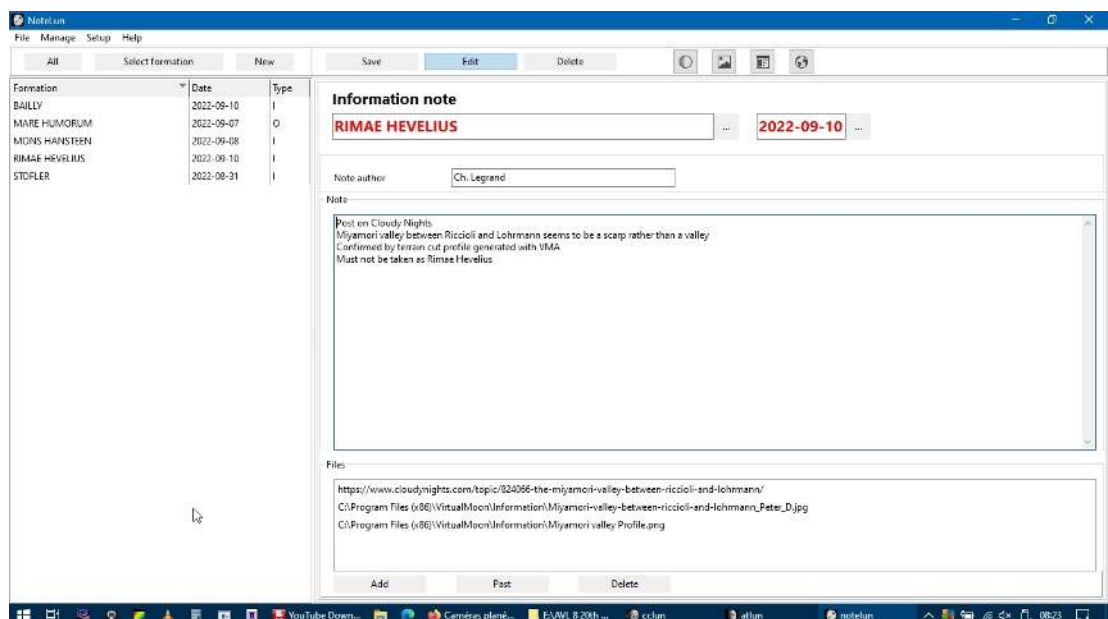
The **"Add"** button allows you to link a file present on a digital storage device physically linked to the same computer: Hard disk / SD card / USB key.

The **"Paste"** button is used to link the form to a web address.

***Once the changes have been made, you MUST click on the "Save" button in the top banner to save the new content. Otherwise, it will be irretrievably lost.***

### "Edit note" Function

After having selected a note in the list on the left, this option gives access to the modification of the chosen note whether it is an observation or information note to correct or complete it.



You have access to all the Name/Date/Author/Note fields of the note on the right to edit the content.

**As for the files linked to the note**, use the **"Add"**, **"Paste"** and **"Delete"** buttons to manage them.

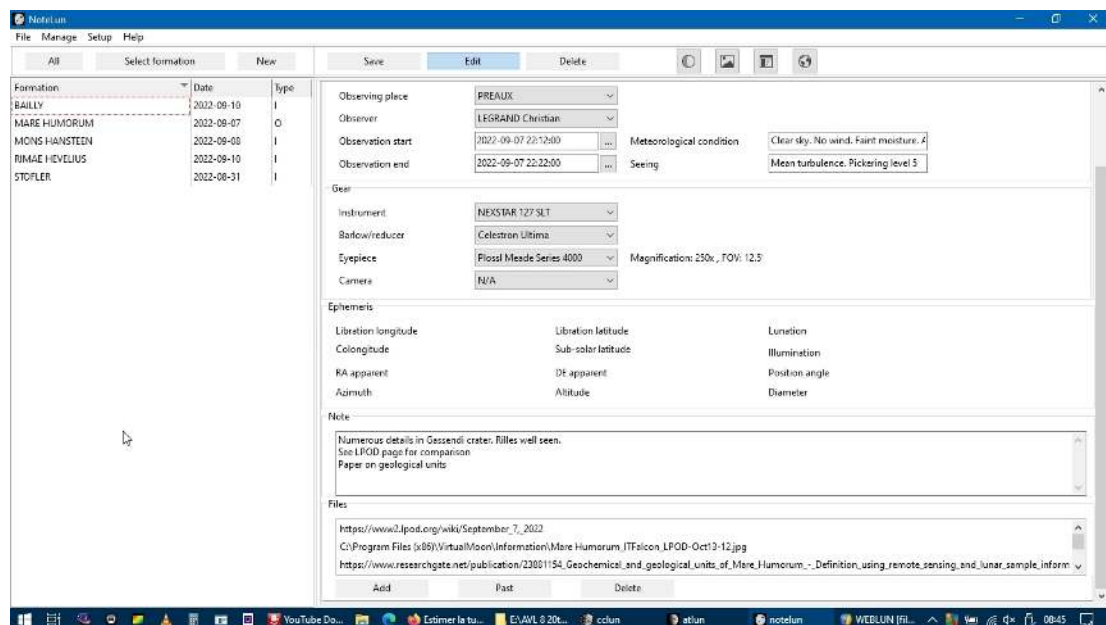
The **"Add"** button allows you to link a file present on a digital storage device physically linked to the same computer: Hard disk / SD card / USB key.

The **"Paste"** button is used to link the form to a web address.

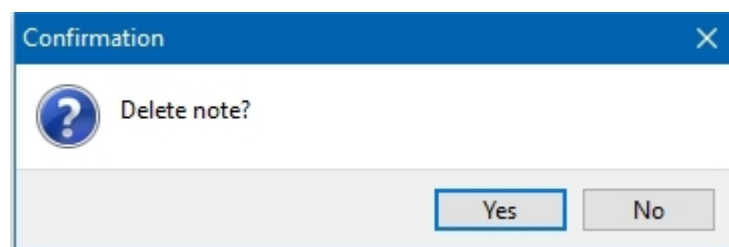
Once the changes have been made, you **MUST** click on the **"Save"** button in the top banner to save the new content. Otherwise, it will be irretrievably lost.

### "Delete note" Function

After having selected a note in the list on the left, this option gives access to the deletion of the chosen note. **WARNING**, this operation is **IMMEDIATE and IRREVERSIBLE!**



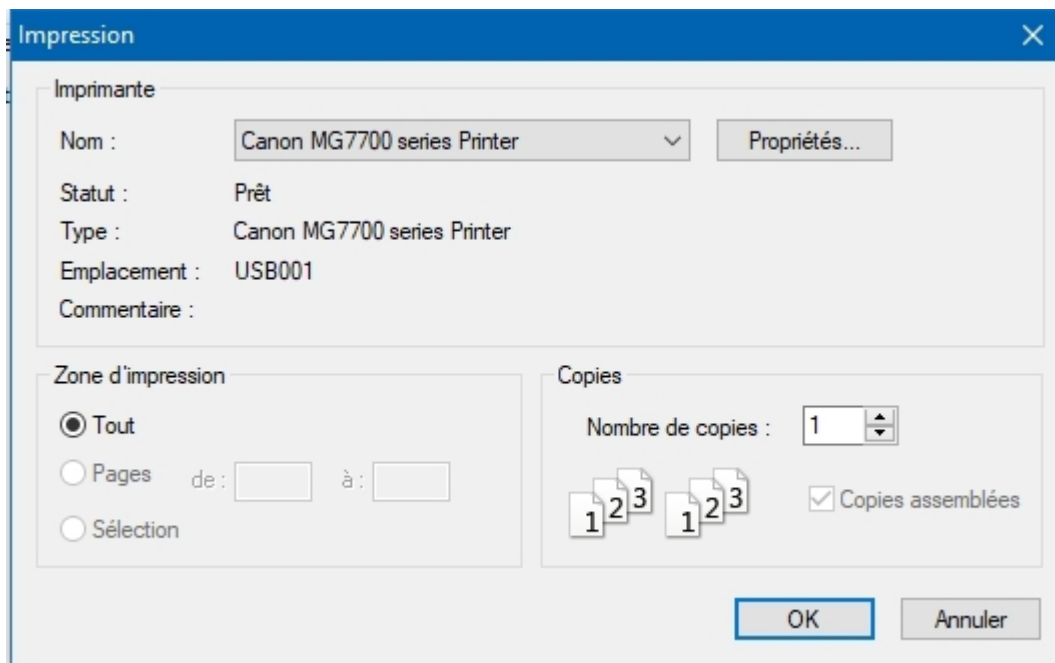
Click on the **"Delete"** button in the TOP banner to delete the chosen note. A confirmation screen then appears:



Click **"Yes"** to delete the note.

### "Print note" Function

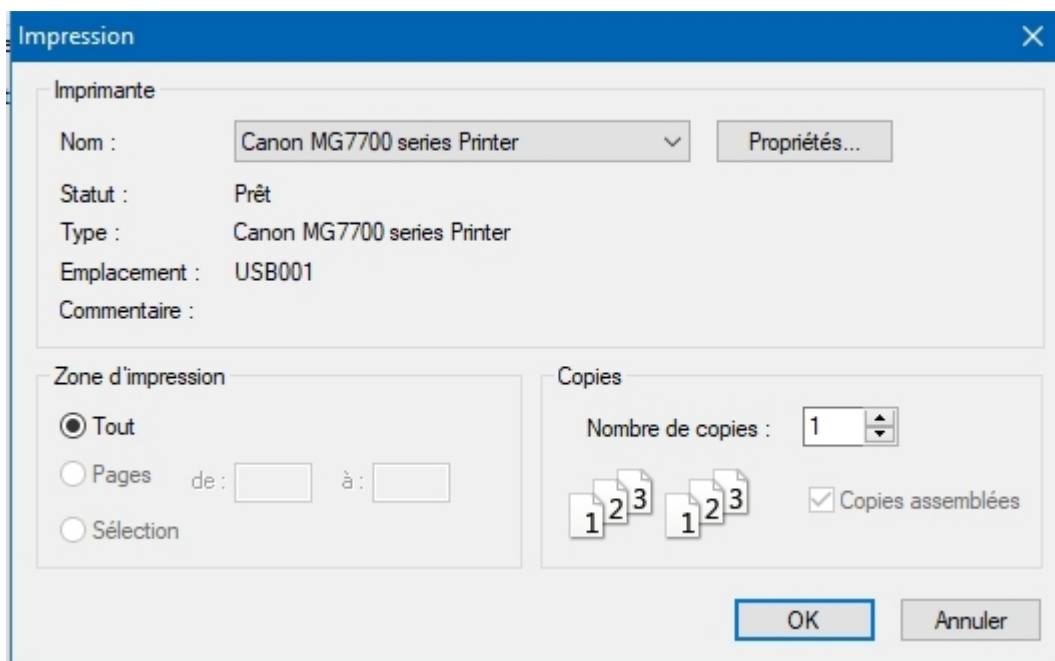
After selecting a note in the list on the left, this option gives access to its printing. It gives access to the print setting frame:



Set the type and properties of the printer and click on the **"OK"** button to start printing the note.

### "Print list of notes" Function

This function allows you to set the printing of the list of notes. It gives access to the print setting frame:

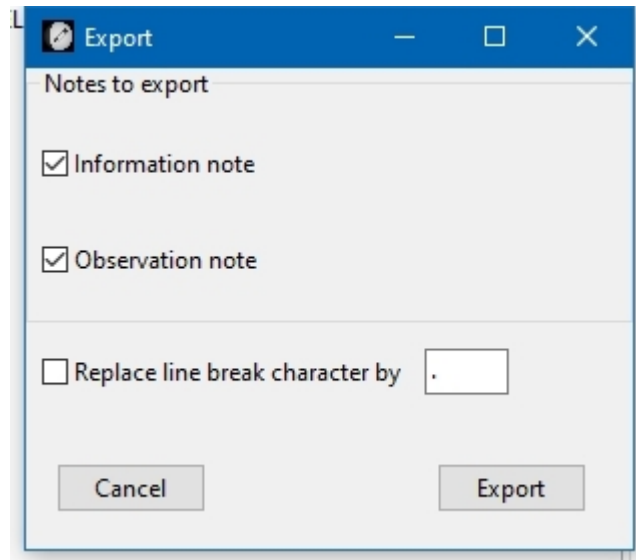


Set the type and properties of the printer and click on the **"OK"** button to start printing the note.

## "Export to CSV" Function

This function allows you to export the list of notes in a file in CSV format which can be used by spreadsheets such as Excel / Microsoft (c) or Calc / LibreOffice (c).

It gives access to the export setting frame:

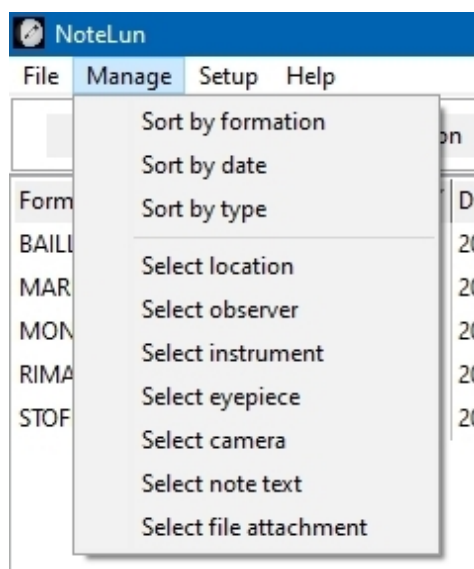


You can choose the type of notes or the set of notes to export. You can choose the line break character depending on the final file you want to obtain.

## "Quit" Function

This function allows you to quit the **NOTELUN** module. It closes the list of notes and the notes as you left them.

## THE "Manage" MENU



It is used in **NOTELUN** to sort the information entered and to extract some of it based on a criterion.



## "Sort by formation" Function

This function allows you to sort the list of notes on the left of the main screen according to the name of the formations for which notes have already been entered.

## "Sort by date" Function

This function allows you to sort the list of notes on the left of the main screen according to the date of entry of the notes already entered.

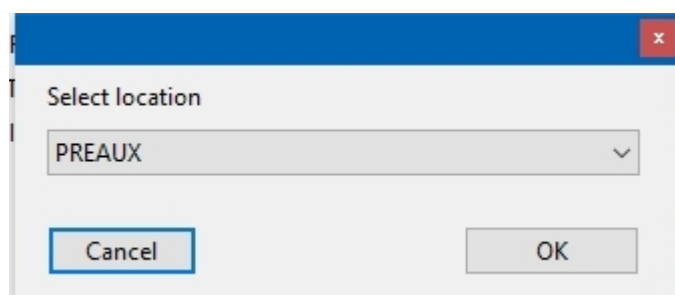
## "Sort by type" Function

This function is used to sort the list of notes on the left of the main screen according to their type: "observation" or "information".

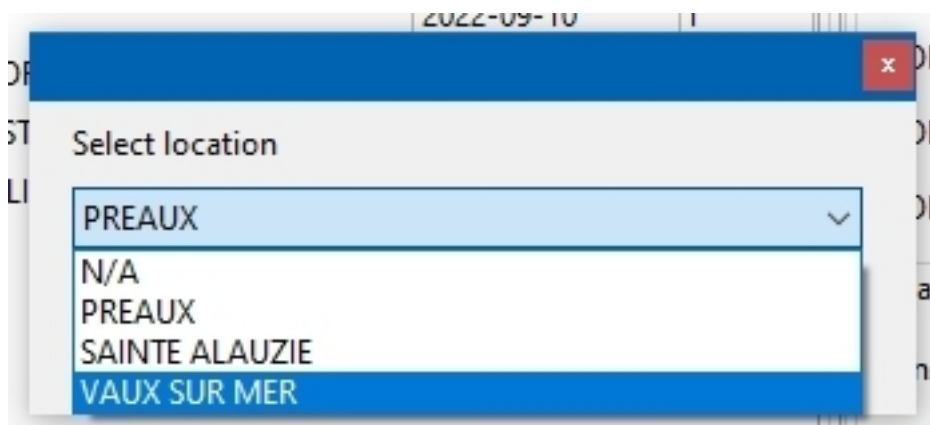
## "Select location" Function

This function is used to display only the observation sheets relating to a single observation site.

**IMPORTANT:** These locations must have been previously entered in the **NOTELUN** module using the "**SETUP**" menu. It gives access to the selection box of the chosen location:



Click on the down arrow to display the drop-down list of registered sites and click on the one that interests you.



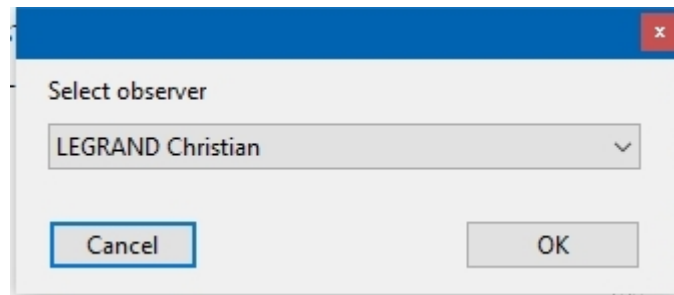
The list of notes on the left will be updated immediately according to your choice.

## "Select observer" Function

This function is used to display only the observation sheets entered by a single observer.

**IMPORTANT:** These observers must have been previously entered in the **NOTELUN** module using the "**SETUP**" menu.

It gives access to the selection box of the chosen observer:



Click on the down arrow to display the drop-down list of registered observers and click on the one you are interested in.



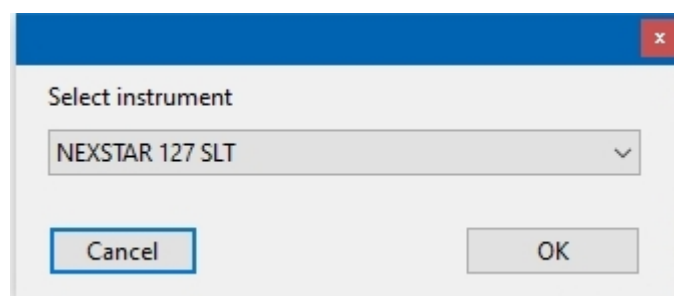
The list of notes on the left will be updated immediately according to your choice.

## "Select instrument' Function

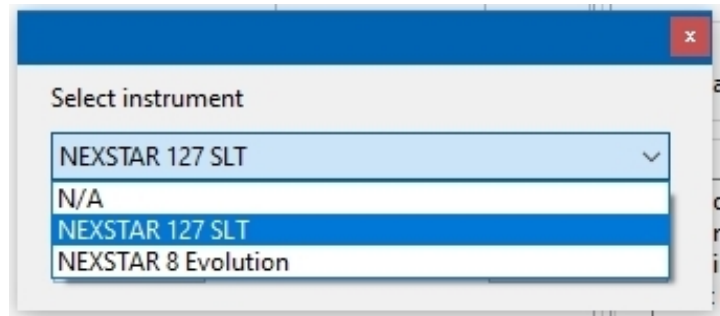
This function is used to display only the observation sheets made with a specific instrument.

**IMPORTANT:** These instruments must have been previously entered in the **NOTELUN** module using the "**SETTINGS**" menu.

It gives access to the selection box of the chosen instrument :



Click on the down arrow to display the drop-down list of registered instruments and click on the one that interests you.



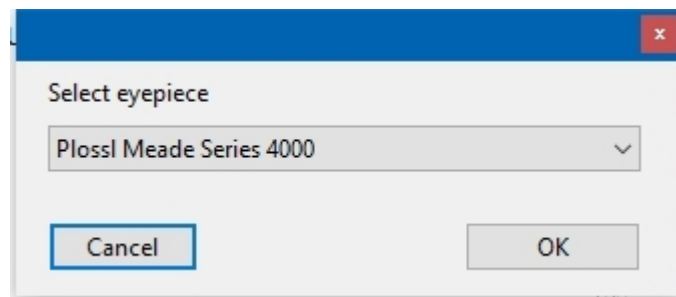
The list of notes on the left will be updated immediately according to your choice.

### "Select eyepiece" Function

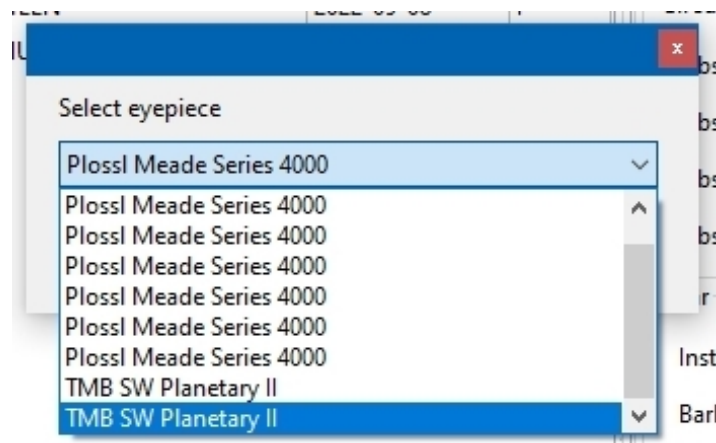
This function is used to display only the observation sheets made with a specific eyepiece.

**IMPORTANT:** These eyepieces must have been previously entered in the **NOTELUN** module using the "**SETUP**" menu.

It gives access to the selection frame of the chosen eyepiece:



Click on the down arrow to display the drop-down list of registered eyepieces and click on the one you are interested in.



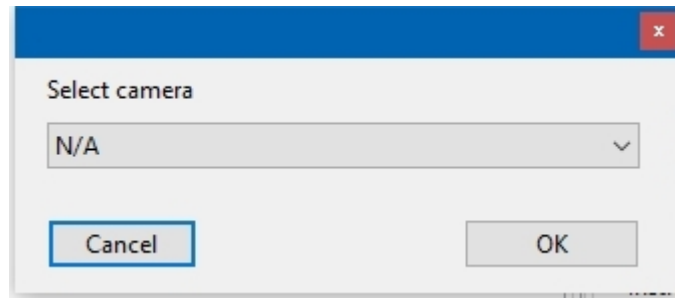
The list of notes on the left will be updated immediately according to your choice.

### "Select camera" Function

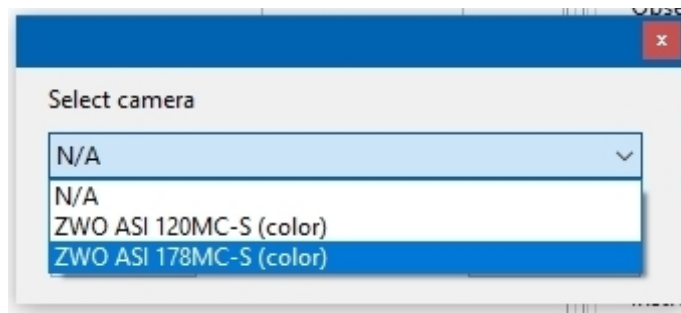
This function is used to display only the observation sheets including an image taken with a specific imaging device.

**IMPORTANT:** These devices must have been previously entered in the **NOTELUN** module using the "**SETUP**" menu.

It gives access to the selection box of the chosen device:



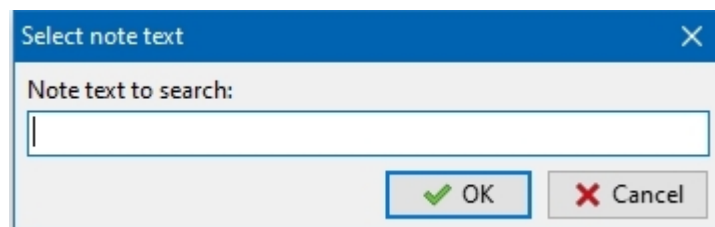
Click the down arrow to display the drop-down list of registered imaging devices and click the desired one.



The list of notes on the left will be updated immediately according to your choice.

### "Select note text" Function

This function makes it possible to display only the information or observation sheets containing a specific text, thus allowing in-depth searches. It gives access to the selection frame of the searched text:

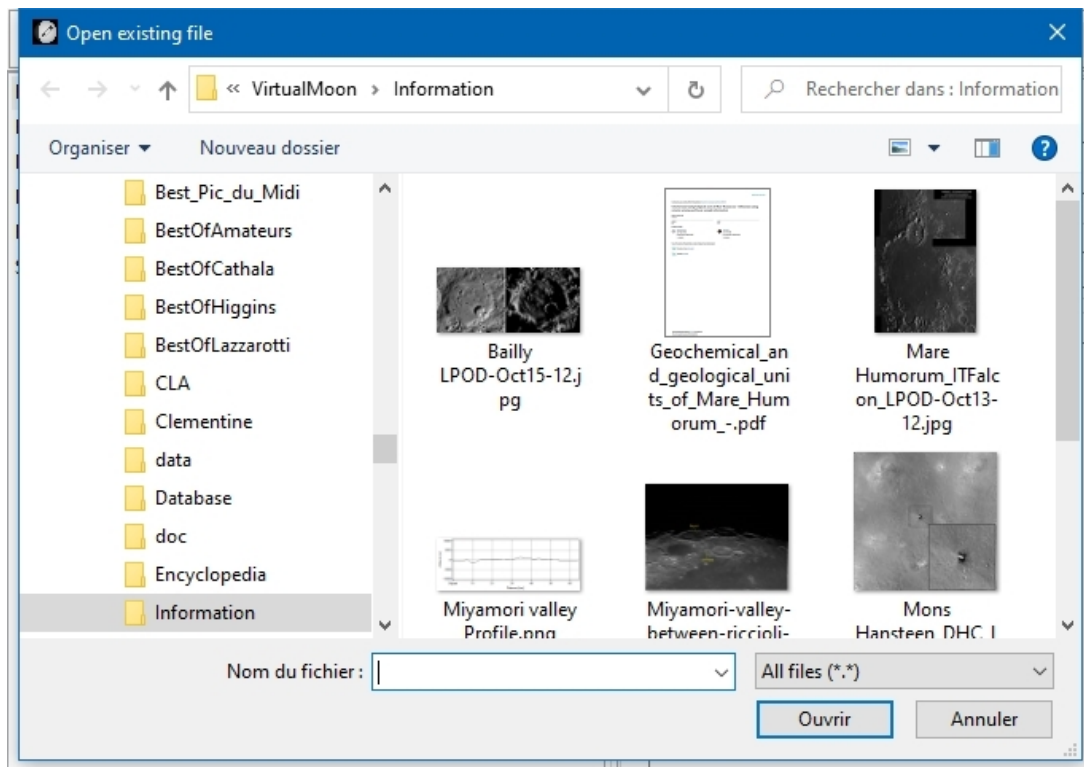


The list of notes on the left will be updated immediately according to your choice.

This very powerful function allows you, for example, to extract the notes in which you would have entered the words "Dark halo crater" or "eratosthenian", etc...

### "Select file attachment" Function

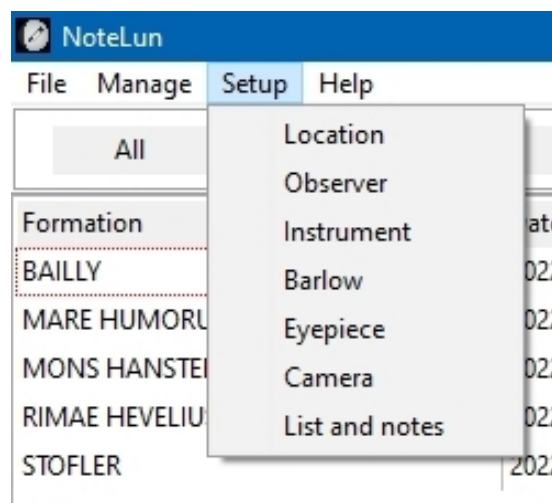
This function is used to display only the information or observation sheets containing a specific file or files of the same type, thus allowing in-depth searches. It gives access to the selection frame of the sought file:



Indeed, thanks to this very powerful function, you can put "wildcards" (%) in the names of the files to be searched, thus allowing very targeted extractions. Examples:  
 %.pdf allows you to extract notes with a link to a "pdf" file.  
 %groove%.% allows you to extract notes that have a link to a file whose name includes the word "groove".

The list of notes on the left will be updated immediately according to your choice.

## THE "Setup" MENU



It is used in **NOTELUN** to access settings for location and observation conditions that you can include in the observation sheets.

## "Location" Setup

This function gives access to the setting frame for observation locations. You can enter several locations.

**Note that this frame has tabs for all possible settings. You can directly access another setting immediately by clicking on the appropriate tab.**

Name	E/W	Longitude	Latitude	Elevation [meter]	Timezone
PREAUX	E	1.0000	50.0	150.0	Europe/Paris
VAUX SUR MER	W	1.1000	45.6	10.0	Europe/Paris
SAINTE ALAUZIE	E	1.3000	44.3	250.0	Europe/Paris

Buttons: Cancel, Add row, Save

Specify the information :

- Name of the site
- E/W indicates whether the longitude is "East" or "West"
- Longitude / Latitude / Altitude - Time zone : Select yours with the drop-down list that will appear when you click inside.

To add a new site, click on the **"Add row"** button. The **"Cancel"** button exits you from the operation without saving the last information entered. To keep the sites returned, it is imperative to click on the **"Save"** button.

## "Observer" Setup

This function gives access to the observer setting frame. You can enter several observers in the event of collective use, for example as in the case of a club.

Name	First name	Pseudo	Contact
LEGRAND	Christian	chlegrand	chlegrand@free.fr

Buttons: Cancel, Add row, Save

Specify the informations :

- Surname & first name of the observer
- Nickname used
- Contact of the observer (Mail / Phone...)

To add a new observer, click on the **"Add row"** button. The **"Cancel"** button exits you from the operation without saving the last information entered. To keep the observers returned, it is imperative to click on the **"Save"** button.

### "Instrument" Setup

This function gives access to the adjustment frame for the instruments used for lunar observation. You can enter several instruments.

Name	Type	Diameter [mm]	Focal [mm]	F/D
NEXSTAR 8 Evolution	Schmidt-Cassegrain	200.0	2000.0	10.00
NEXSTAR 127 SLT	Maksutov	127.0	1500.0	11.81

You can enter the types and characteristics of the different instruments. The F/D ratio is automatically calculated according to the diameter and the focal length that you have entered in the two fields concerned.

To add a new instrument, click on the button **"Add row"**. The **"Cancel"** button exits you from the operation without saving the last information entered. To keep the entered instruments, it is imperative to click on the **"Save"** button.

### "Barlow" Setup

This function gives access to the setting frame of the focal length multiplier that you are using. It can be Barlow lenses or focal reducers.

Name	Power
Celestron Ultima	2.0
Meade Series 4000	2.0

Enter the name and the multiplier coefficient of the device. In the case of a focal reducer, enter the coefficient less than 1.

To add a new focal length multiplier, click on the **"Add row"** button. The **"Cancel"** button exits you from the operation without saving the last information entered. To keep the retracted focal length multipliers, it is imperative to click on the **"Save"** button.

### "Eyepiece" Setup

This function gives access to the setting frame of the eyepieces you are using.

Name	Focal [mm]	Field [°]
Plossl Meade Series 4000	40.0	45.0
Plossl Meade Series 4000	26.0	52.0
Plossl Meade Series 4000	20.0	52.0
Plossl Meade Series 4000	15.0	52.0
Plossl Meade Series 4000	12.0	52.0
Plossl Meade Series 4000	9.7	52.0
TMB SW Planetary II	7.0	62.0
TMB SW Planetary II	5.0	62.0

Specify the information concerning each eyepiece:

- Type
- Focal length
- Visual field in degrees



To add a new eyepiece, click on the **"Add row"** button The **"Cancel"** button exits you from the operation without saving the last information entered. To keep the eyepieces retracted, it is imperative to click on the **"Save"** button.

## "Camera" Setup

This function gives access to the setting frame of the imaging sensors used.

Name	Horizontal resolution [pixel]	Vertical resolution [pixel]	Pixel size [μ]
ZWO ASI 120MC-S (color)	1280.0	960.0	3.75
ZWO ASI 178MC-S (color)	3096.0	2080.0	2.4

Specify information about each imaging device:

- Name
- Horizontal and vertical resolution
- Pixel size

To add a new device, click on the **"Add row"** button The **"Cancel"** button exits you from the operation without saving the last information entered. To keep the entered devices, it is imperative to click on the **"Save"** button.

## "List and notes" Setup

This function gives access to the setting frame for the list of notes on the left in the main screen, the list of notes on the right in the main screen and the print parameters.

Default list sorting options

☒ By formation name
 ☐ By date
 ☐ By type of note

☐ Reverse sort order

Note options

☒ Show ephemeris

Print options

Font to print note text  
default

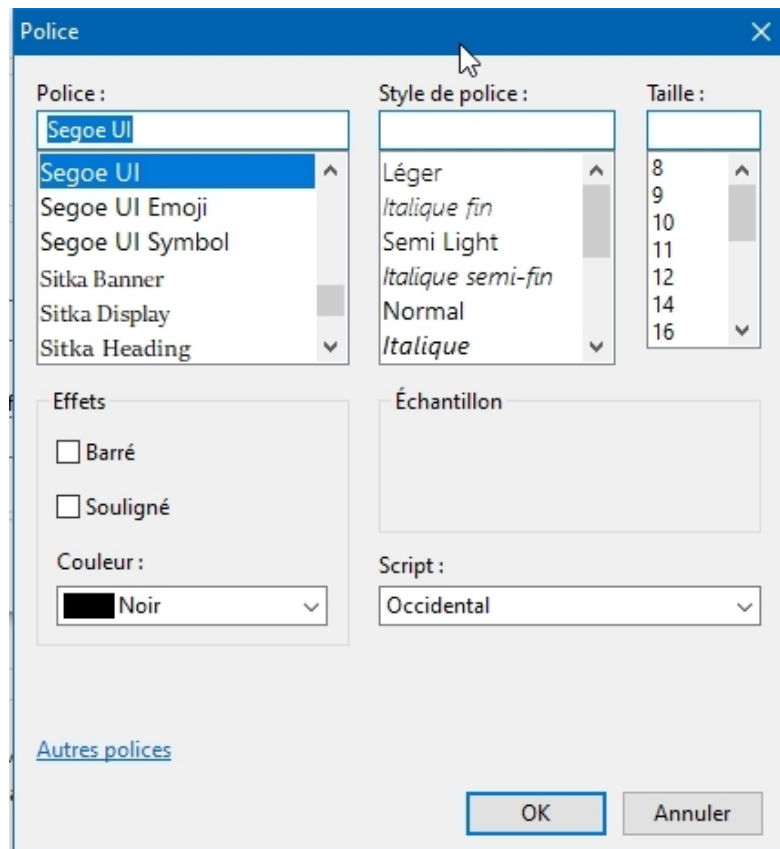
Fixed pitch font to print list of notes  
default

You can sort the display of the list of notes on the left according to the name of the formations, according to the date of entry or according to the type of note (Observation / Information) by checking the chosen field.

You can reverse the sort order by checking "**Reverse sort order**".

You can include the lunar ephemeris corresponding to the date of an observation in the record of the observation made on this same date by checking the box "**Show ephemeris**".

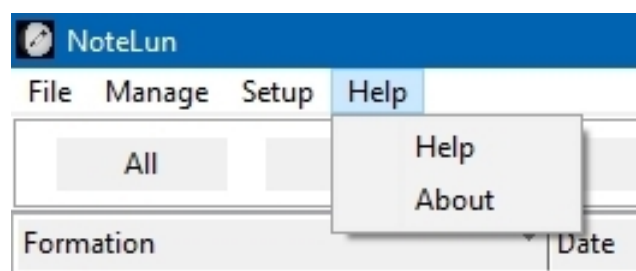
For printing, you can choose the fonts for printing notes and lists by clicking on the "..."  
button which gives access to the Windows font selection box (c).



The "**Cancel**" button exits you from the operation without saving the last information entered.

To keep the settings entered, it is imperative to click on the "**Save**" button.

## "Help" MENU



Traditional in all Windows (c) software, it is used in NOTELUN to launch this documentation with "**Help**" and to display the credits in "**About**".

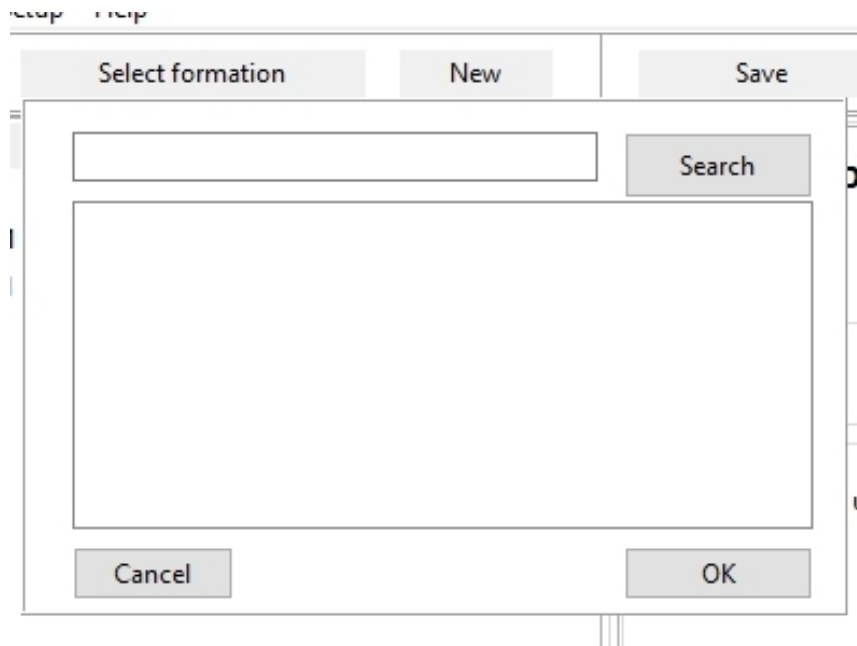
# THE BANNER

## "All" BUTTON

It is used in **NOTELUN** to display all the notes entered, observation & information, in the list on the left of the screen.

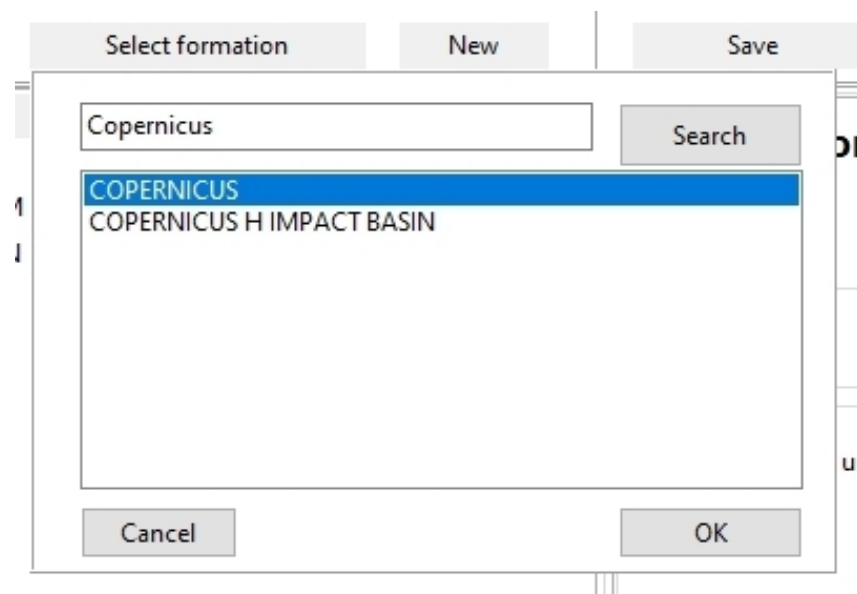
## "Select formation" BUTTON

It is used in NOTELUN to select a formation to display its observation and information notes. It gives access to the formation selection frame :



Enter the name of the formation in the field at the top left of the frame and click on the **"Search"** button. The list of formations containing this name is displayed.

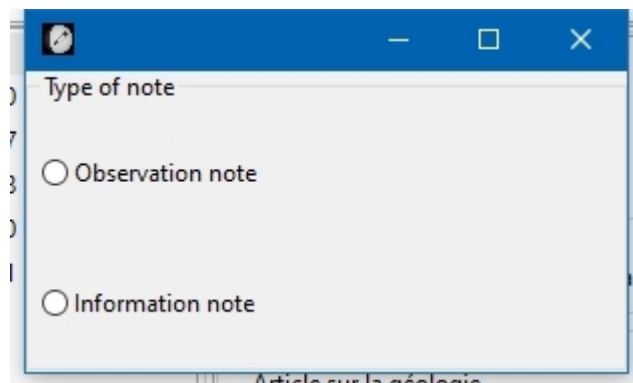
**WARNING** : it is dependent on the databases that you have selected in the **"Databases"** tab of the **"Configuration"** menu of the **"ATLUN"** module.



Click on the one that interests you to display the list of notes relating to it.

## "New" BUTTON

It is used in **NOTELUN** to create an observation note or an information sheet.  
It gives access to the frame for choosing the type of note to create:



Check the desired type and the note input canvas will be automatically displayed.

## "Save" BUTTON

It is used in **NOTELUN** to record the new observation or information note created.

## "Edit" BUTTON

It is used in **NOTELUN** to modify an observation or information note that has already been created.

Choose the note to modify in the list on the left, then click on the "**Modify**" button. The note modification frame will be displayed.

## "Delete" BUTTON

It is used in **NOTELUN** to delete an observation or information note that has already been created.

Choose the note to delete from the list on the left, then click the "**Delete**" button. The concerned note will disappear from the list on the left.

**WARNING : this operation is IMMEDIATE and IRREVERSIBLE !**

## "ATLUN" BUTTON



It is used in **NOTELUN** to launch the **VMA** map display module **ATLUN**.

The formation targeted by the note in **NOTELUN** will then be selected and highlighted in **ATLUN**.

## "PHOTLUN" BUTTON



It is used in **NOTELUN** to launch the **PHOTLUN** module for displaying **VMA** formations images libraries.

The images of the formation covered by the note in **NOTELUN** will then be selected and highlighted in **PHOTLUN**.

## "DATLUN" BUTTON



It is used in **NOTELUN** to launch the **DATLUN** module for displaying **VMA** formations databases.

The records of the formations databases containing the name of the **NOTELUN** note will be extracted and can be consulted in **DATLUN**.

## "WEBLUN" BUTTON



It is used in **NOTELUN** to launch the **WEBLUN** module for consulting websites with a lunar vocation

## ***COPYRIGHTS***

**NOTELUN** © is a name registered by Christian Legrand.

Any use of **NOTELUN** outside the **Virtual Moon Atlas** is subject to the prior authorization of the authors.

***END OF "NOTELUN" MANUAL***

***Copyright Christian Legrand & Patrick Chevalley / 2023***